

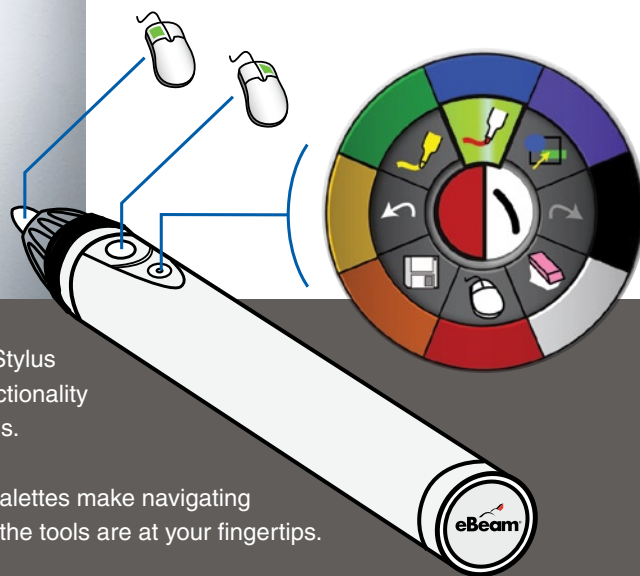
The most durable, innovative interactive whiteboard ever.

Designed to meet the needs of the multimedia classroom, the eBeam Integral combines a low-glare porcelain-enameled steel surface and eBeam technology to provide educators with one of the most durable and easy-to-use interactive whiteboards on the market.

Used in conjunction with a digital projector and a computer, eBeam turns the entire porcelain surface into an interactive workspace where the eBeam interactive stylus becomes a mouse and allows teachers, professors, and students to control the computer, run PowerPoint® presentations, and annotate slides or documents directly from the board.



Surface by Alfher Porcewol®



Multi-button Interactive Stylus provides mouse-like functionality for all of your applications.

Innovative circular tool palettes make navigating the software easy. All of the tools are at your fingertips.



A heavy-duty interactive board for the real world.

Three sizes to suite your unique needs.



178cm x 99cm



178cm x 118cm



190cm x 120cm



High quality, durable construction.

The eBeam Integral is available in a variety of sizes that can be mounted directly on a wall or attached to an adjustable, rolling stand. It features a low-glare, porcelain-enamelled steel surface produced by Alfher Porcewol, a world leader in porcelain-on-steel technology. Unlike the porous materials used in most interactive whiteboards, the porcelain cleans easily and is highly resistant to scratches, stains and corrosion. This along with its low glare (80 GU) rating means the Alfher surface always provides a crisp, clear background for projected images.



Intuitive, yet powerful software.

The eBeam Interact software easily integrates with your current software and workflow, while offering powerful tools to increase productivity. The eBeam Interact floating tool palettes were designed specifically for large-screen interaction and provide the most popular tools in a revolutionary circular user interface. The software also enables educators, presenters and consultants to collaborate via the Internet making remote lessons and meetings not only possible but much more engaging, efficient, and cost-effective.

eBeam Integral Components

- Integral Low-Glare Porcelain Board by Alfher Porcewol® (30 year Alfher Surface Guarantee)
- Interactive Stylus
- CD with eBeam Interact software for PC
- AA battery
- 15' (5m) USB cable

Warranty

- Three year on-site warranty on hardware and software
- BECTA Interactive Whiteboard Framework Specification Compliant (pending at time of printing)

Minimum System Requirements

- Windows® - compatible PC with Pentium™ II 400 MHz+ processor and Windows 2000, XP, Tablet PC
- Macintosh® Power PC® 400mhz and Mac OS X 10.3 or newer
- 10 MB available hard drive space
- Available USB port



©2006 Luidia, Inc. All rights reserved. eBeam and the eBeam logo are trademarks or registered trademarks of Luidia, Inc. Other product names and logos may be trademarks or registered trademarks of their respective owners. Used under license.

Contact your local eBeam reseller:

